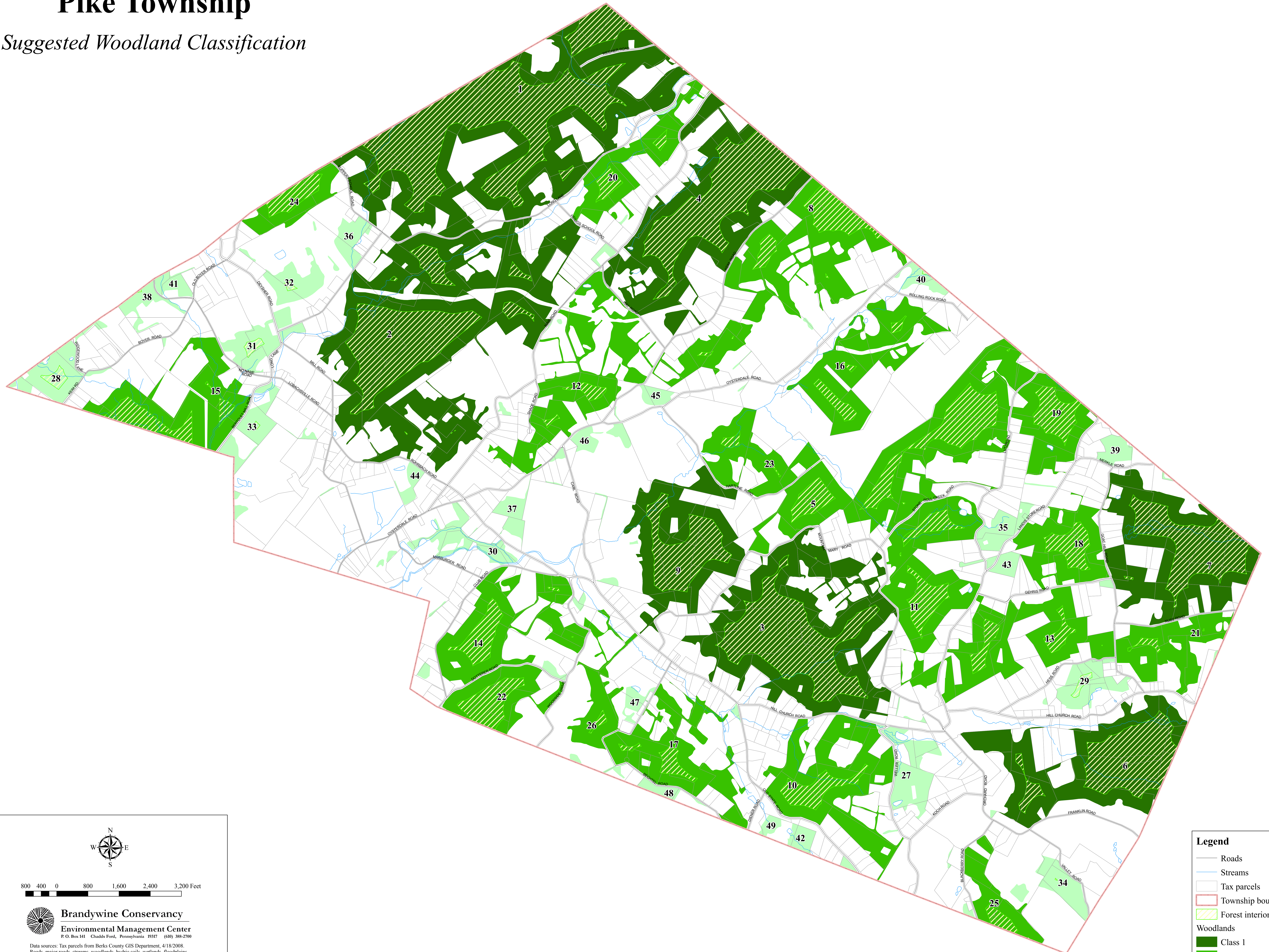


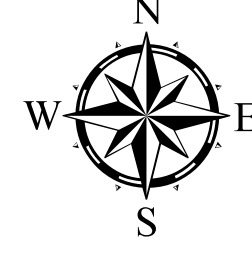
# Pike Township

## Suggested Woodland Classification



**Legend**

- Roads
- Streams
- Tax parcels
- Township boundary
- Forest interiors
- Woodlands
  - Class 1
  - Class 2
  - Class 3

  
800 400 0 800 1,600 2,400 3,200 Feet

**Brandywine Conservancy**  
Environmental Management Center  
P.O. Box 141 Chadds Ford, Pennsylvania 19317 (610) 388-2700

Data sources: Tax parcels from Berks County GIS Department, 4/18/2008.  
Roads, major roads, streams, woodlands, hydric soils, wetlands, floodplains, steep slopes and municipal boundaries from data disk provided by Berks County Planning Commission, 2003.

Date created: September 24, 2009